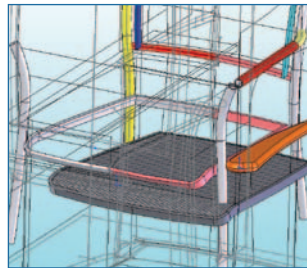
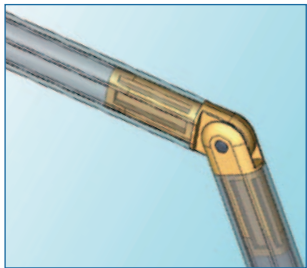


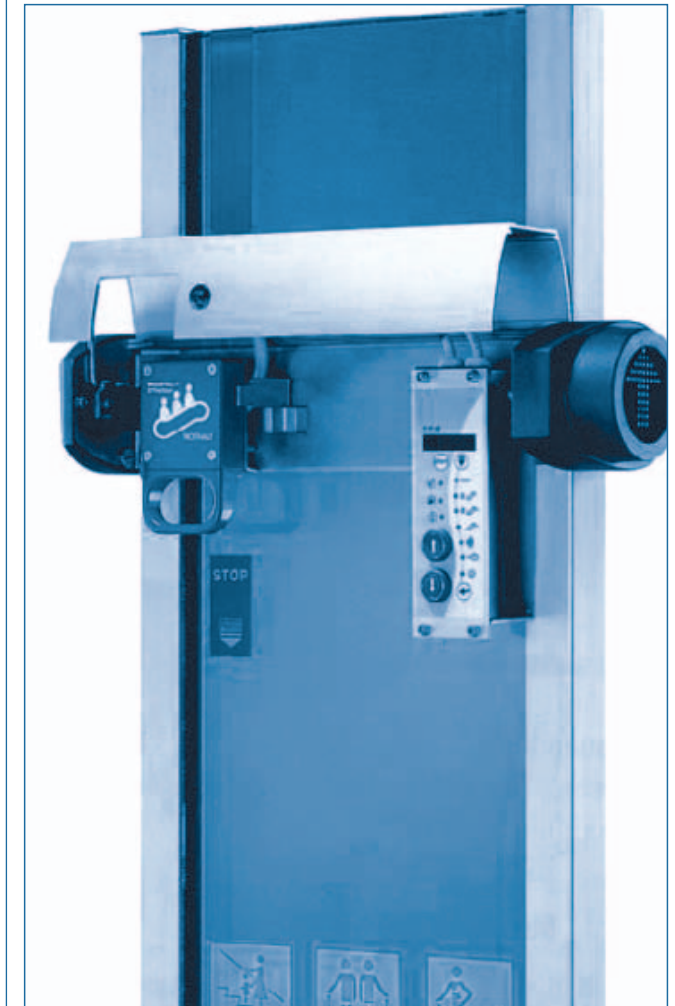
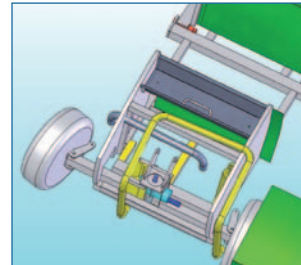
PORTFOLIO

- Conception and creativity
- Development
- Verification of solutions | constructive details
- Pilot production | prototypes | zero series
- Validation
- Complete construction | documentation
- Certification, preparation and implementation
- Handing over to production
- Technology transfer | turn-key pilot production



AREAS

- Mechanical concepts
- Mechatronic systems
- Actuators and sensors in mechanical systems
- Usability and design for machines



EXPERIENCE & SERVICE

With up to 20 years of working experience and 150 projects brought in serial production we are able to help you in three different fields of duty:

::: A

- Simultaneous product design and engineering

::: B

- Engineering management, concept development for fine mechanic and injection moulding products and processes with characteristic assembly overpass und feasibility
- Value analysis for hidden potentials and technical improvements

::: C

- Interactive synergies of branches in product and process development
- (Re-) Concept development with focus on fine mechanic, mechatronic and injection moulding products

ASSOCIATIVES

bauer engineering*



CPE GMBH

CEO | Dipl.-Ing. | Dipl. Wirt.-Ing.

Achim Flessler

Hanns-Martin-Schleyer-Str. 18a, Haus 3
47877 Willich, Germany

Fon: +49 (2154) 953 658-0

Fax: +49 (2154) 953 658-30

Mobil: +49 (173) 566 26 68

achim.flessler@cp-engineering.de

www.cp-engineering.de